

18 Footers

2020 JJ Giltinan Courses



Course 1 – NORTH EAST

Start Line in the vicinity of Clarke Island
Beashel Buoy – YA
Shark Island – YA
Clarke Island – LM
Beashel Buoy – YA
Clarke Island – LM
Beashel Buoy – YA
Shark Island – YA
Finish Line in the vicinity of Clarke Island

Course 2 – EAST

Start Line in the vicinity of Robertson Point
Rose Bay – LM
Clarke Island – LM
Kurraba Point – LM
Rose Bay – LM
Kurraba Point – LM
Rose Bay – LM
Finish Line in the vicinity of Clarke Island

Course 3 – SOUTH EAST

Start Line in the vicinity of Taylors Bay
Rose Bay – LM
Robertson Point – LM (Port)
Clarke Island – LM (Port)
Chowder Bay – LM
Rose Bay – LM
Taylors Bay – YA
Rose Bay – LM
Robertson Point – LM (Port)
Finish Line in the vicinity of Clarke Island

Course 4 – SOUTH

Start line in the vicinity of Athol Bay
Clarke Island – LM (PORT)
Obelisk Bay – YA
Shark Island – YA
Athol Bay East – LM (PORT)
Clarke Island – LM (PORT)
Obelisk Bay – YA
Shark Island – YA
Athol Bay East – LM (PORT)
Finish line in the vicinity of Clarke Island

COURSE 5 – WEST

Start line in vicinity of Rose Bay
Kurraba Point – LM (PORT)
Clarke Island – LM (PORT)
Rose Bay – LM (PORT)
Kurraba Point – LM (PORT)
Rose Bay – LM (PORT)
Kurraba Point (PORT)
Finish Line in vicinity of Clarke Island

Course 1 – NORTH EAST

WINDWARD/LEEWARD COURSES COURSE 6/2 WINDWARD/LEEWARD

Start line
Mark 1 (PORT)
Gate 2
Mark 1 (PORT)
Finish Line to port side of Committee Vessel

COURSE 6/3 WINDWARD/LEEWARD

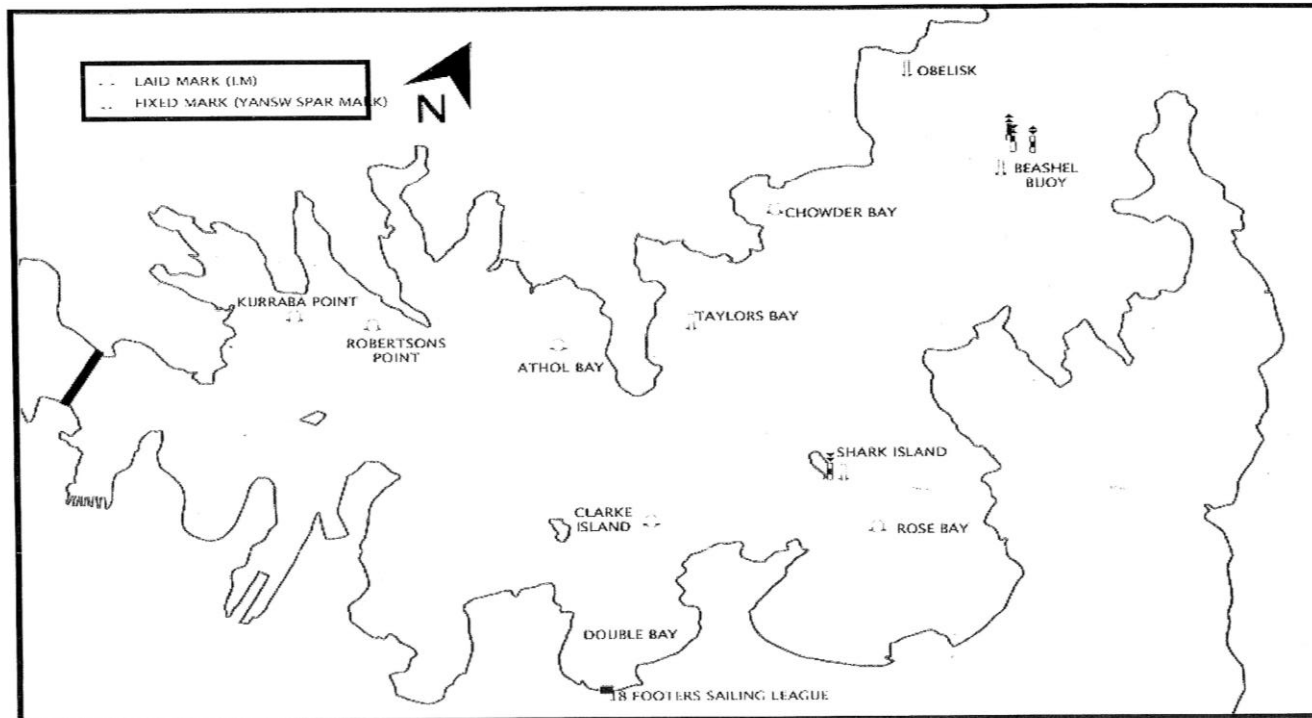
Start line
Mark 1 (PORT)
Gate 2
Mark 1 (PORT)
Gate 2
Mark 1 (PORT)
Finish Line to port side of Committee Vessel

COURSE 6/4 WINDWARD/LEEWARD

Start line
Mark 1 (PORT)
Gate 2
Mark 1 (PORT)
Gate 2
Mark 1 (PORT)
Gate 2
Mark 1 (PORT)
Finish Line to port side of Committee Vessel

18 Footers

2020 JJ Giltinan Courses



NOTES:

- All marks to STARBOARD unless otherwise noted.
- YA markes are YNSW permanently fixed yellow spar marks.
- LM marks are temporarily laid white inflatable marks with fluro band.
- In Course 6/2, Course 6/3 and Course 6/4 Mark 1 will be laid to windward of the start line. (Distance and bearing will be displayed from the Committee Vessel)
- If one of the leeward gate marks is missing, boats shall round the existing leeward mark to port
- Start locations described for the above courses are a guide only and may vary at the discretion of the race committee